

# the Davis.

DAVIS MUSEUM AT WELLESLEY COLLEGE

**FOR IMMEDIATE RELEASE**

**March 31, 2016**

Media Contact: Mary Agnew

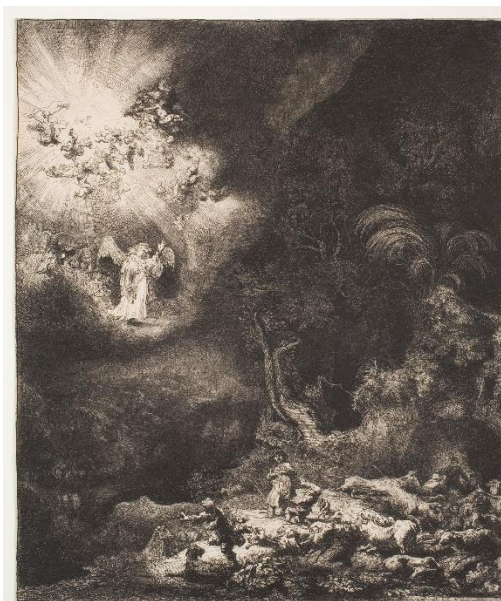
617-512-7489, Magnew@wellesley.edu

*High-resolution images and interviews available upon request*

## **THE DAVIS MUSEUM AT WELLESLEY COLLEGE AWARDED INTERNATIONAL FINE PRINT DEALERS ASSOCIATION FOUNDATION CURATORIAL PROGRAM GRANT**

WELLESLEY, Mass. – The Davis Museum at Wellesley College has been awarded a 2016 International Fine Print Dealers Association (IFPDA) Foundation Curatorial Program grant. This grant will support the specialized focus of one of the Davis Museum’s summer interns in the curatorial department on works on paper in the Museum’s collections, in preparation for the institution’s major reinstatement of its permanent collections galleries.

“We are committed to education and strive to contribute to the cultivation of the next generation of scholars, curators, dealers, and specialists in the field of fine prints,” said Dr. Lisa Fischman, Ruth Gordon Shapiro ’37 Director of the Davis Museum at Wellesley College. “This award is especially fruitful to us because of the depth of preparation leading into the unveiling of our permanent galleries in the fall.”



Rembrandt Van Rijn, *The Angel Appearing to the Shepherds* (1634). Museum purchase, The Mary Clothier Slade Fund.

The Curatorial Intern for Prints will work closely with Claire Whitner, Associate Curator at the Davis Museum, to devise rotations from the Museum’s extensive print collection. In the fall of 2016, the Davis will open three floors of new galleries featuring its permanent collections, which will include works on paper installed alongside paintings, sculpture, and decorative arts.

### **ABOUT THE INTERNATIONAL FINE PRINT DEALERS ASSOCIATION**

The International Fine Print Dealers Association (IFPDA) is a 501(c) 3 charitable organization established in 2009 to inspire and fund educational projects aimed at fostering connoisseurship in the field of fine prints for a new generation of collectors, curators, and specialists.

The IFPDA Foundation aims to motivate museums and educational institutions to sustain and fortify their commitment to this important form of artistic expression by providing financial support for curatorial internships, exhibitions, lectures, and educational materials.

### **ABOUT THE DAVIS MUSEUM**

One of the oldest and most acclaimed academic fine arts museums in the United States, the Davis Museum is a vital force in the intellectual, pedagogical and social life of Wellesley College. It seeks to create an environment that encourages visual literacy, inspires new ideas, and fosters involvement with the arts both within the College and the larger community.

### **ABOUT WELLESLEY COLLEGE AND THE ARTS**

The Wellesley College arts curriculum and the highly acclaimed Davis Museum are integral components of the College's liberal arts education. Departments and programs from across the campus enliven the community with world-class programming— classical and popular music, visual arts, theatre, dance, author readings, symposia, and lectures by some of today's leading artists and creative thinkers—most of which are free and open to the public.

Since 1875, Wellesley College has been the preeminent liberal arts college for women. Known for its intellectual rigor and its remarkable track record for the cultivation of women leaders in every arena, Wellesley—only 12 miles from Boston—is home to some 2300 undergraduates from every state and 75 countries.

###